

The Panorama of Cars in the 20th Century

Compiled by Wang Jianai



Beijing Institute of Technology Press



25

2. Citroen



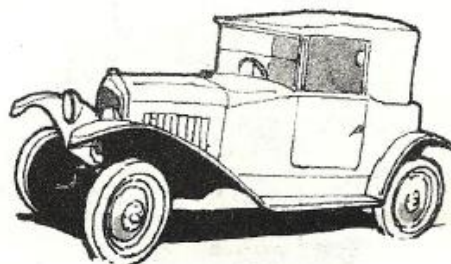
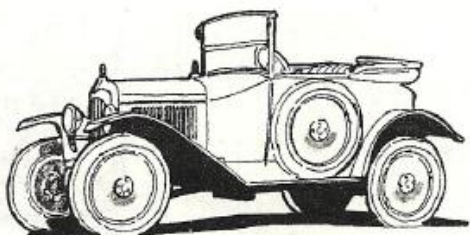
Founded in 1913, Citroen Co., Ltd. initially was a gear company. The logo of Citroen takes the shape of a pair of herringbone gears. As early as in 1930s, Citroen launched mass production of front-wheel-drive cars, which might be called the founder of front-wheel-drive cars. For several decades, front-wheel drive has always been a peculiar characteristic of Citroen cars.

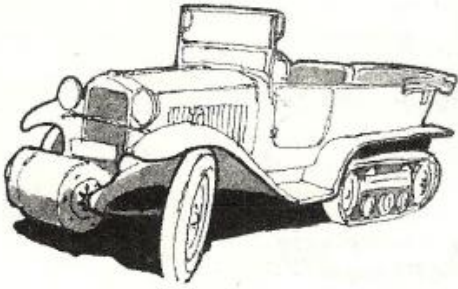
29 1996: Kangoo

① 1921: Citroen

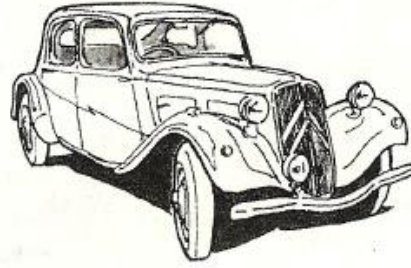
② 1923: Citroen 5CV

① ②





③ ④



③ 1934: Citroën P17D half-track light SUV, four-cylinder, 1.6L, 114km/h

④ 1934: Citroën 7A, four-cylinder, 1.9L, 41kW, front-wheel drive, 115km/h

⑤ 1950: Citroën 2CV, two-cylinder, 0.38L, 3.5kW, 48km/h

⑥ 1953: Citroën 2CV, two-cylinder, 0.44L, 18kW, 102km/h

⑦ 1953: Citroën Big Six, four-cylinder, 2.9L, 59kW, front-wheel drive, 135km/h

⑧ 1955: Citroën Light 15 Model 11B

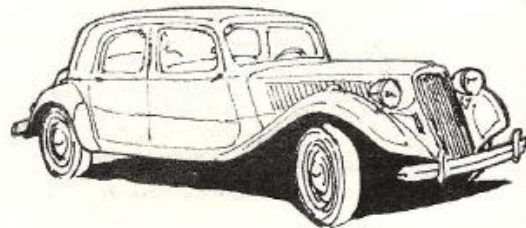
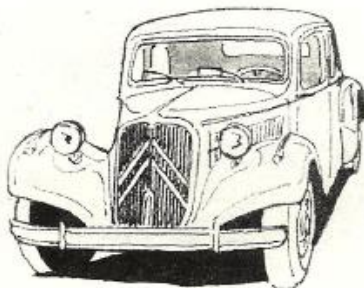
⑤



⑥

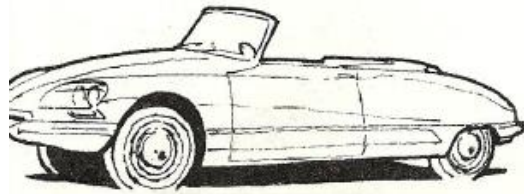
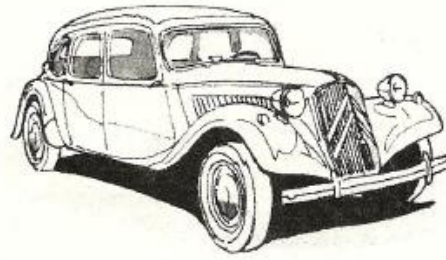


⑧ ⑦





⑩ ⑨



⑪

⑨ 1955: Citroën Light 15 Model 11B, four-cylinder, 1.9L, 46kW, 130km/h

⑩ 1955: Citroën DS19, four-cylinder, 1.9L, 55kW, front-wheel drive, 161km/h

⑪ 1959: Citroën ID19, four-cylinder, 2.0L, 62kW, front-wheel drive, 160km/h



⑫

⑫ 1960: Citroën Ami, two-cylinder, 0.6L, 16kW, front-wheel drive, 105km/h

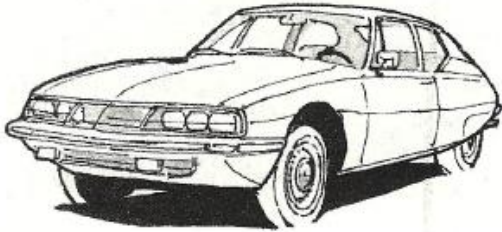
⑬ 1970: Citroën GS1220, four-cylinder, 1.1L, 41kW, 149km/h

⑭ 1972: Citroën DS21, 2.35L, 188km/h



⑬ ⑭





⑮ ⑯



⑮ 1973: Citroën SM limousine, V6-cylinder, 2.7L, 125kW, front-wheel drive, 225km/h

⑯ 1974: Citroën Mehari passenger and goods double-service car, two-cylinder, 0.6L, 24kW, front-wheel drive, 120km/h, all-plastic body

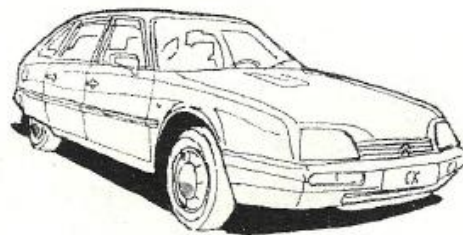
⑰ 1975: Citroën Ami 8, two-cylinder, 0.6L, 24kW, front-wheel drive, 125km/h

⑱ 1976: Citroën CX, four-cylinder, 2.5L, 89kW, 190km/h

⑲ 1980: Citroën 2CV, two-cylinder, 0.44L, 18kW, 102km/h

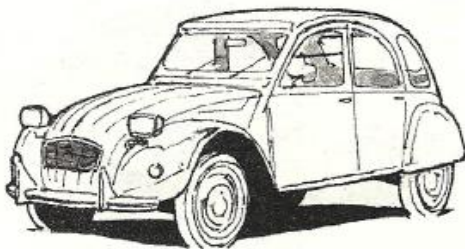
⑳ 1988: Citroën 2CV, four-cylinder, 0.6L, 21kW, 107km/h

⑰



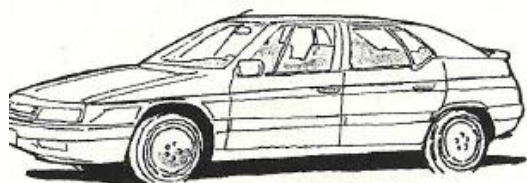
⑱

⑳ ⑲





22 21



23

20 1990: Citroën AX, four-cylinder, 1.1L, 44kW, front-wheel drive, 167km/h

22 1990: Citroën BX, four-cylinder, 1.4L, 55kW, 170km/h

23 1992: Citroën XM, V6-cylinder, 3.0L, 123kW, 222km/h

24



24 1996: Citroën Saxo, four-cylinder, 1.6L, 90kW, front-wheel drive, 193km/h

26 1997: Citroën Xsara

24



25 26

